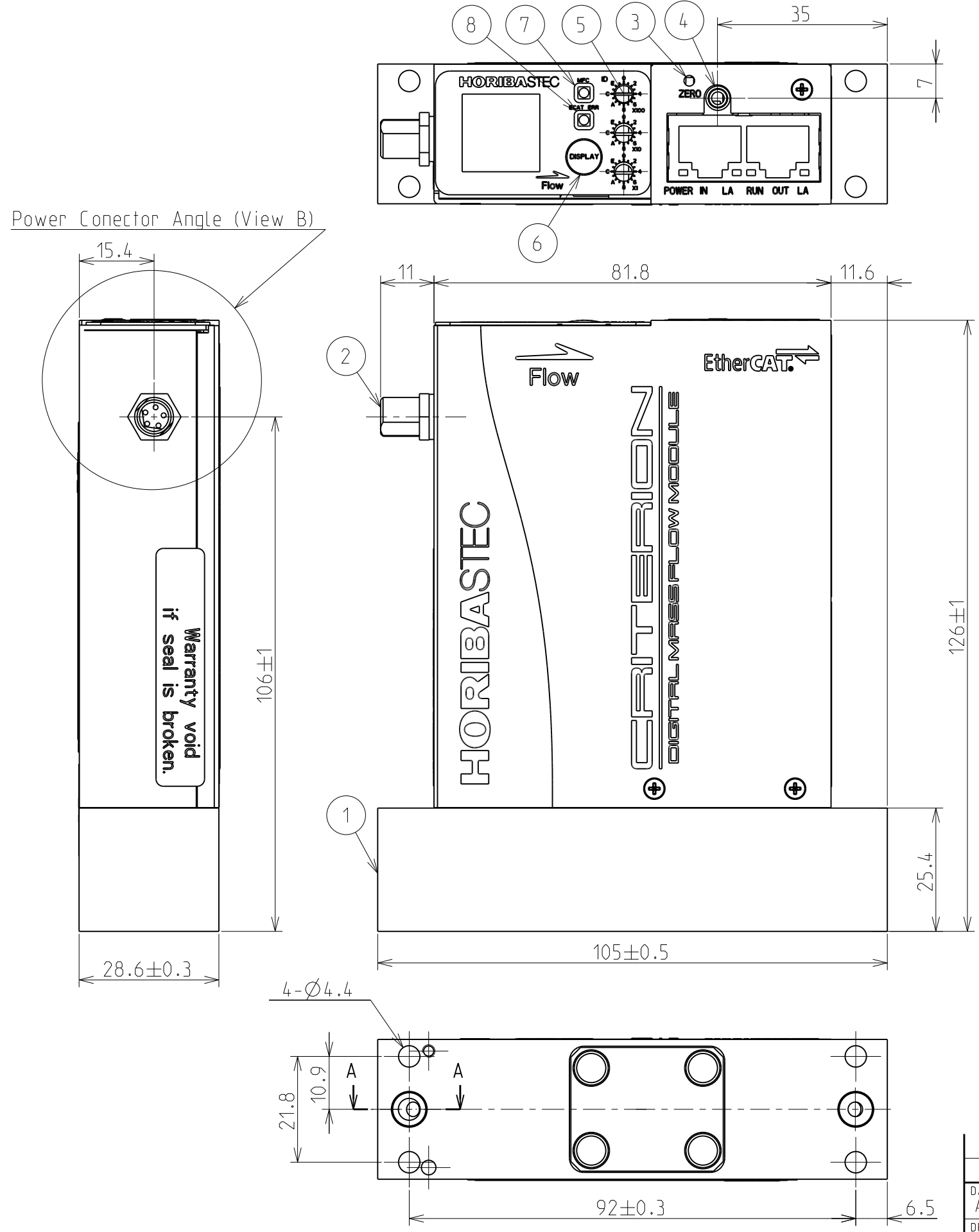
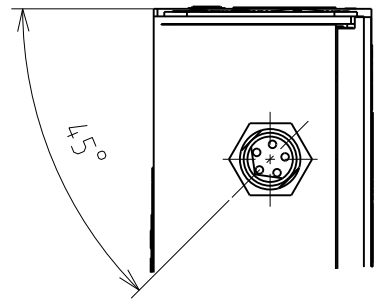


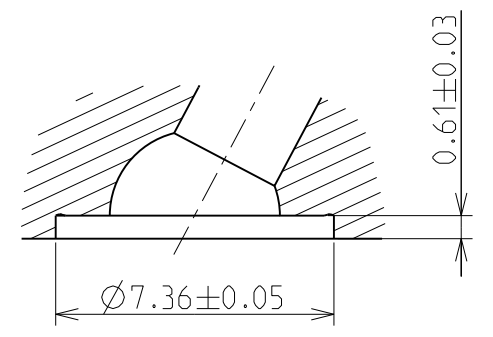
A5012467
GZ0000619533



NO.	PARTS NAME	REMARKS
1	Flange	A
	C-SEAL	
2	Power Connector	B
	5Pin,M8	
3	ZERO Adjust Switch	B
4	DIAGNOSTIC PORT	C
5	MFC ID (x1,x10,x100)	C
	For EtherCAT Communication	
6	Display Switch	D
7	LED(MFC)	D
	For MFC Exceptions Error	
8	LED(ECAT ERR)	E
	For Communication Error	



Power Conector Angle (View B)
Scale 1:1



Sectional View A-A
(Scale 5:1)

NO.	SPEC.	PART NO.	REMARKS
NAME D707 MG 14C3 FLANGE			
SCALE 1:1		UNLESS OTHERWISE SPECIFIED DIMENSIONS ARE IN MILLIMETERS/THIRD ANGLE PROJECTION	
DATE AUG.26.2020	DATE SEP. 4, 2020	DATE SEP. 7, 2020	DATE SEP. 7, 2020
DRAWN N.Uegaki	DESIGNED H.Park	CHECKED A.Iwamoto	APPROVED K.Shakudo
			GZ0000619533
			A5012467