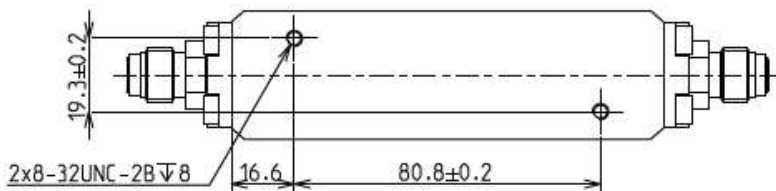
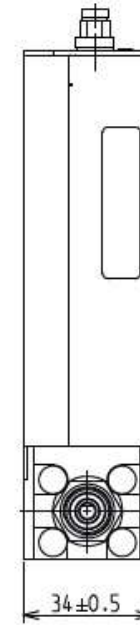
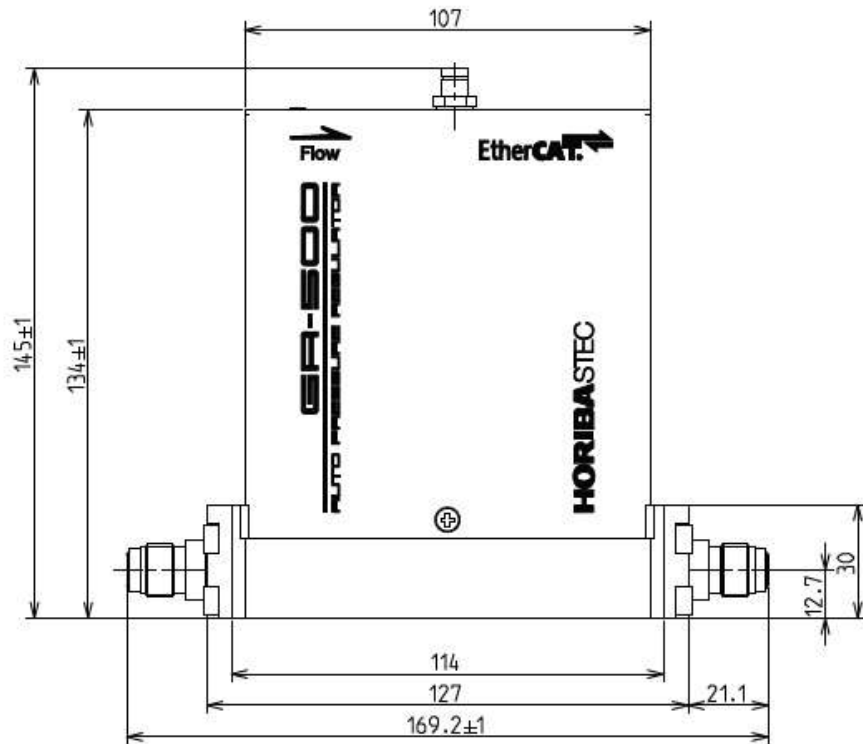
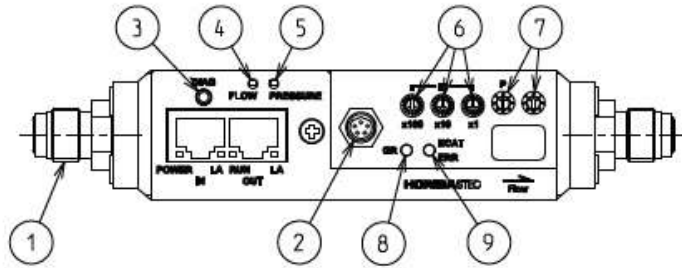


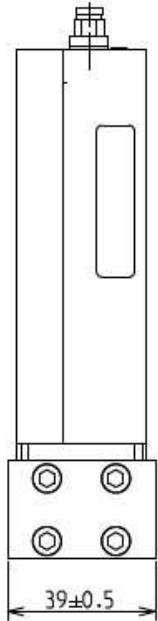
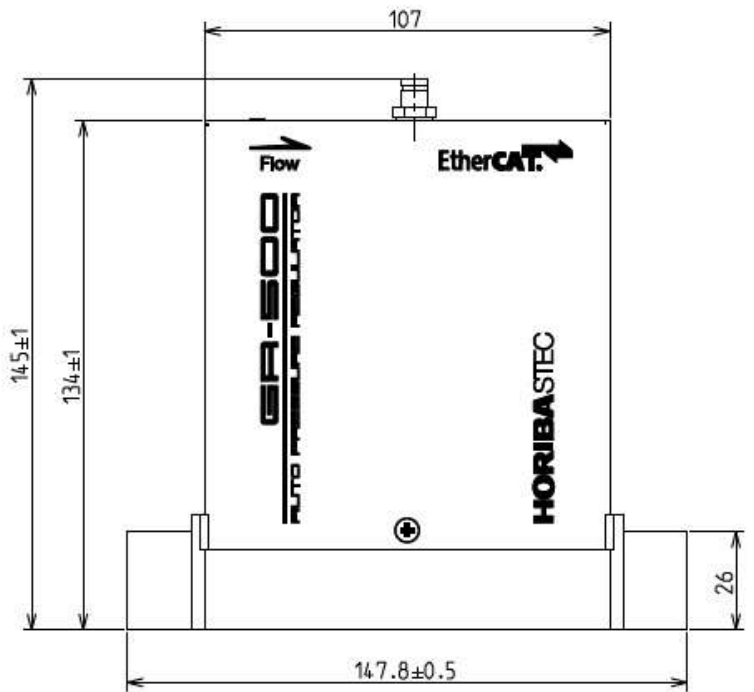
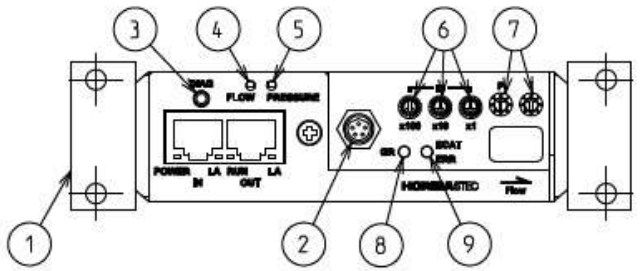
NO.	PARTS NAME	REMARKS
1	Fitting	
	1/4inch VCR or equivalent	
2	D-subminiature Pin Connector	
	15Pin, #4-40UNC	
3	ZERO Adjust Switch	
	PRESSURE	
4	ZERO Adjust Switch	
	FLOW	
5	DIAGNOSTIC PORT	
6	PID Gain Rotary Switch	
7	LED (GR)	
	For GR Exception Error	
8	LED	
	Trip point	

NO.	SPEC.	PART NO.	REMARKS
NAME			
GR-511F			
4CRZB(169.2mm)			
SCALE	1:2	UNLESS OTHERWISE SPECIFIED DIMENSIONS ARE IN MILLIMETERS/THIRD ANGLE PROJECTION	

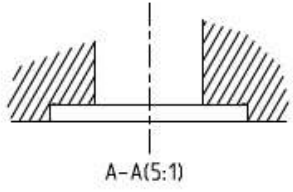
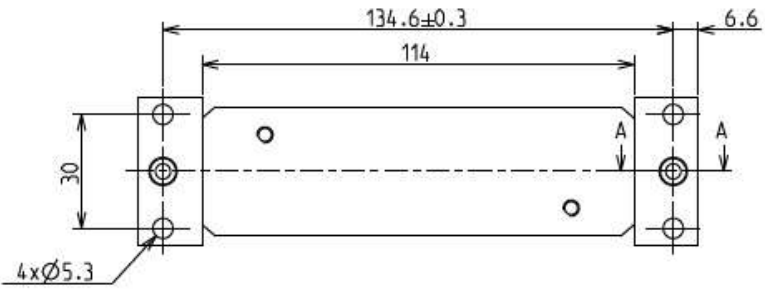


NO.	PARTS NAME	REMARKS
1	Fitting 1/4 inch VCR or equivalent	A
2	Power Connector 5Pin,M8	
3	Service Communication Port	
4	Zero Adjust Switch Flow	B
5	Zero Adjust Switch Pressure	
6	ID Switch For EtherCAT Communication	C
7	PID Gain Switch (P. I)	
8	LED (GR Status) For GR Exceptions Error	D
9	LED (EtherCAT Error)	

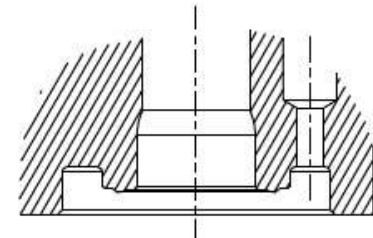
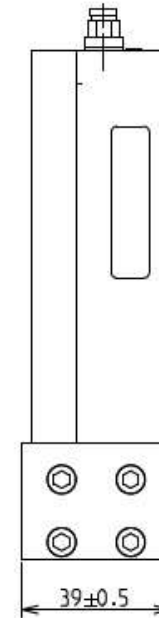
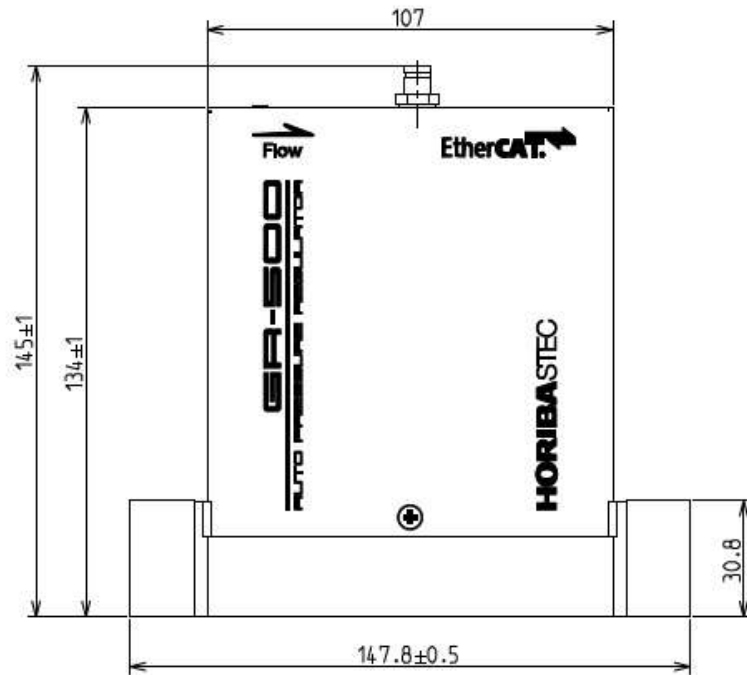
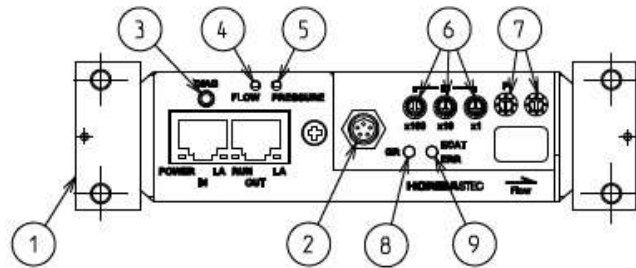
NO.	SPEC.	PART NO.	REMARKS
NAME	GR-517F 4CRZB(169.2mm)		J
SCALE	1:2	UNLESS OTHERWISE SPECIFIED DIMENSIONS ARE IN MILLIMETERS/THIRD ANGLE PROJECTION	



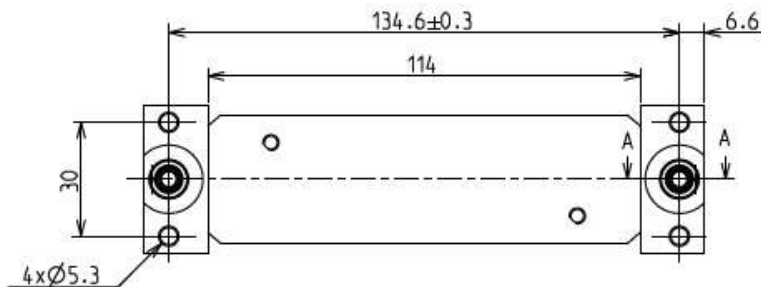
NO.	PARTS NAME	REMARKS
1	Flange C-SEAL	A
2	Power Connector 5Pin,MB	
3	Service Communication Port	
4	Zero Adjust Switch Flow	B
5	Zero Adjust Switch Pressure	
6	ID Switch For EtherCAT Communication	C
7	PID Gain Switch (P. I)	
8	LED(GR Status) For GR Exceptions Error	D
9	LED(EtherCAT Error)	



NO.	SPEC.	PART NO.	REMARKS
NAME GR-517F 24CYA FLANGE			
SCALE	1:√2	UNLESS OTHERWISE SPECIFIED DIMENSIONS ARE IN MILLIMETERS/THIRD ANGLE PROJECTION	



A-A(5:1)



NO.	PARTS NAME	REMARKS
1	Flange 1/4 inch UPG	A
2	Power Connector 5Pin,MB	
3	Service Communication Port	
4	Zero Adjust Switch Flow	B
5	Zero Adjust Switch Pressure	
6	ID Switch For EtherCAT Communication	C
7	PID Gain Switch (P. I)	
8	LED(GR Status) For GR Exceptions Error	D
9	LED(EtherCAT Error)	

NO.	SPEC.	PART NO.	REMARKS
NAME GR-517F 24W YA FLANGE			
SCALE	1:√2	UNLESS OTHERWISE SPECIFIED DIMENSIONS ARE IN MILLIMETERS/THIRD ANGLE PROJECTION	