

ScopeLite™ 200

Microscope Illuminator

ELEMENTAL ANALYSIS
FLUORESCENCE
GRATINGS & OEM SPECTROMETERS
OPTICAL COMPONENTS
CUSTOM SOLUTIONS
PARTICLE CHARACTERIZATION
RAMAN / AFM-RAMAN / TERS
SPECTROSCOPIC ELLIPSONOMETRY
SPR IMAGING

ScopeLite™ 200 is a low cost metal halide illuminator that is always focused on your microscope



Much better than a traditional Hg lamp for fluorescence illumination.

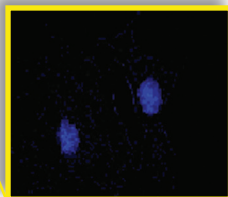
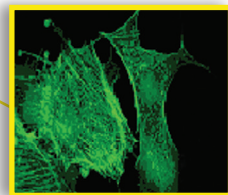
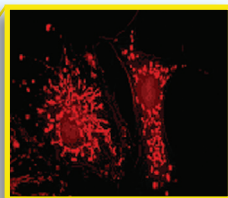
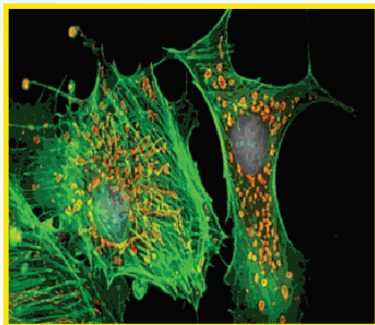
The ScopeLite™ 200 optimizes a pre-aligned, self-focusing 200 watt metal halide lamp. Combining the line output of a mercury lamp spectrum with the versatility of a broadband lamp, the ScopeLite's 200 watt metal halide lamp is ideal for a multitude of applications ranging from epifluorescence microscopy to cosmetic dentistry.

Features and Benefits

- Pre-aligned and always aligned
- Snap-in lamp replacement
- Quick release liquid light guide and lamp
- Illumination power adjustment standard
- Ultra stable bulb output (DC operation)
- TTL-operated mechanical shutter
- Intensity control
- Choice of microscope adaptors

Applications

- Epifluorescence microscopy
- Biotechnology: microArray
- Industrial: UV curing
- Machine vision
- Cosmetic dentistry
- Absorption microscopy: photodynamic therapy
- Medical: endoscope, light source
- Entertainment: projection
- And many more...



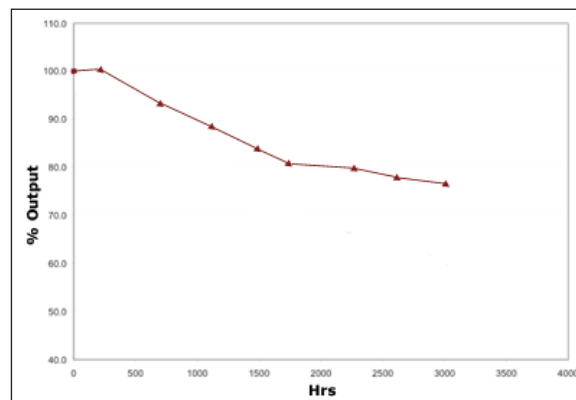
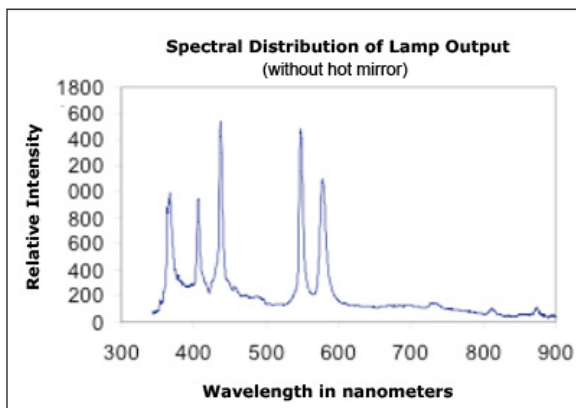
Ideal for RGB Imaging!



Specifications

Lamp Characteristics	
Arc Gap	1.2 mm nominal
Avg Output	5100 Lm at 0 hrs
CCT	6500 ± 500 K
Lamp Life (typical)	2000 hrs
Warm-up	2 minutes
Focusing optics	Built in reflector
Coupling to scope	2 meter, 3 mm core liquid light guide
Other Specifications	
Output power	7 watts (out of light guide)
Short term stability (typical)	Better than 0.06% RMS
Long term drift	<0.1% RMS
Lamp life	2000 hours typical
Liquid light guide	3 mm x 2 meter liquid light guide (300 - 700 nm)
Power supply	AC universal input switch mode 85–260 V, 50 or 60 Hz converted to DC output to lamp
Igniter	Mounted internally on the power supply
Cooling	Air-cooled by internal fan
Illumination adjustment	5 preset apertures, 25%, 50%, 75%, 100% and complete block
Control panel	On/Off Switch, Shutter and Start Buttons, TTL input
Certification	CE, UL & CSA
Warranty	One year excluding lamp and LLG
Dimensions	261 x 145 x 200 mm

Lamp Output



Over 2000 Hours of Operation

HORIBA
Scientific

info.sci@horiba.com

USA: +1 732 494 8660
UK: +44 (0)20 8204 8142
China: +86 (0)21 6289 6060

France: +33 (0)1 69 74 72 00
Italy: +39 2 5760 3050
Brazil: + 55 11 2923 5400

www.horiba.com/scientific

Germany: +49 (0)89 4623 17-0
Japan: +81 (75) 313-81231
Other: +1 732 494 8660