

## External Filter Holders

220FSA, AFW-C6P(M), ACH-CFWM

ELEMENTAL ANALYSIS
FLUORESCENCE
GRATINGS & OEM SPECTROMETERS
OPTICAL COMPONENTS
FORENSICS
PARTICLE CHARACTERIZATION
RAMAN
SPECTROSCOPIC ELLIPSOMETRY
SPR IMAGING

### External filter wheels and slides

There are a variety of external filter holders from HORIBA Scientific that are designed for use with any of our large selection of monochromators. When designing a spectroscopy system, filters are often used to distinguish desired signal from higher orders of diffracted light. A full range of 1" order sorting, long pass, short pass, and bandpass filters are available.

The three position filter slide, 220FSA, enables the user to mount three filters with a manual slide to select between different choices. Also available is a manual (AFW-C6P) and motorized (AFW-C6PM) six position filter wheel. The motorized filter wheel is powered and controlled directly through HORIBA's monochromators and software. Finally, there is also a dual chopper/filter wheel combination (ACH-CFWM) for experiments where both a filter wheel and chopper must be mounted to the spectrometer entrance.

### Features and Benefits

- External filters- alignment of monochromator is unaffected by the presence of filters
- Order sorting- signal may be distinguished from higher order diffractions through the use of long-pass filters
- Full automation- motorized filter wheel may be configured to switch positions automatically as wavelength is stepped through HORIBA's software

### Control

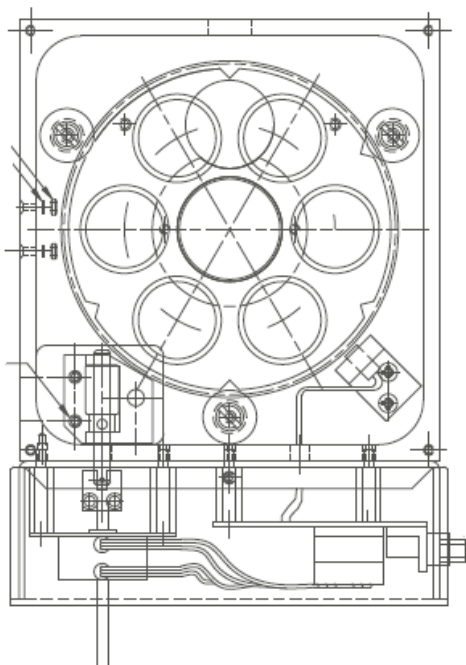
The filter slide uses a simple push/pull design to switch between three different filter positions. The manual filter wheel uses a crank with indicator to rotate between six different filter positions. The motorized filter wheel is powered via a 15-pin DIN connector directly from HORIBA's line of monochromators. The filter position is set through software, either LabSpec, SynerJY, or through LabVIEW VIs, and may be automated to switch position as the wavelength is scanned.



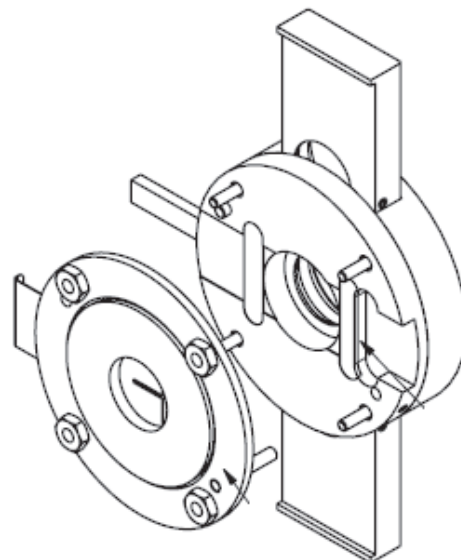
## Specifications

Part Number	220FSA	AFW-C6P	AFW-C6PM	AFW-CFWM
Automation	Manual	Manual	Motorized	Motorized
Number of positions	3	6	6	6
Response time	N/A	N/A	2.5 s (one position) 8 s (full rotation)	2.5 s (one position) 8 s (full rotation)

### Mechanical Diagrams, AFW-C6PM



### Mechanical Diagrams, 220FSA



**OPTICAL BUILDING BLOCKS**



[info.sci@horiba.com](mailto:info.sci@horiba.com) [www.horiba.com/opticalbuildingblocks](http://www.horiba.com/opticalbuildingblocks)

**USA:** +1 732 494 8660  
**UK:** +44 (0)20 8204 8142  
**China:** +86 (0)21 6289 6060

**France:** +33 (0)1 69 74 72 00  
**Italy:** +39 2 5760 3050  
**Brazil:** +55 (0)11 5545 1500

**Germany:** +49 (0)89 4623 17-0  
**Japan:** +81 (0)3 6206 4721  
**Other:** +1 732 494 8660

**HORIBA**  
Scientific