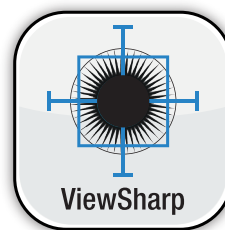


EasyNav™: Easy Navigation Package for Optimal Raman Imaging

Sharp Raman Images in the Blink of an Eye!

The new EasyNav™ package makes it easy to navigate through your image and acquire sharp Raman images in the blink of an eye, thanks to three new revolutionary applications: NavMap™, NavSharp™ and ViewSharp™.



Unique Features & Benefits

With the groundbreaking EasyNav™ package, it is fast and easy to navigate in-focus, in real-time, to identify the region of interest and obtain sharp, clear Raman chemical images.

EasyNav™ has been tested and validated on a large variety of samples. HORIBA NavMap™ + NavSharp™ + ViewSharp™ apps can be used together or separately to deliver a powerful user experience for all Raman users.

- Navigate easily through your image with NavMap™
- Navigate your sharp image in real-time with NavSharp™
- Construct a 3D topography and acquire rapid, in-focus Raman images of the analyzed sample with ViewSharp™

The EasyNav™ package technology is protected by a pending patent.

EasyNav™ Package: Main Features

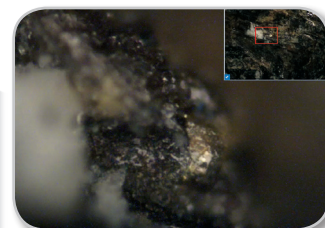


NavMap™

NavMap™ is a new video feature that shows the global sample and the zoomed sample's image in the region of interest simultaneously. This ensures straightforward navigation and identification of the region of interest.

Easy Navigation

Real-time



NavMap™ View

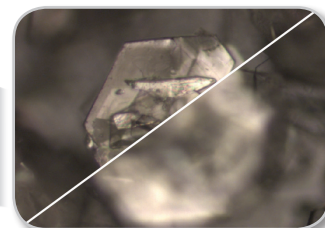


NavSharp™

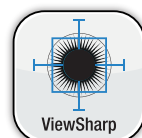
NavSharp™ technology delivers sharp and rapid navigation on a sample image with any topography, keeping the field of view constantly focussed on the sample surface.

Optimum Focus

Enhanced User Experience



With/Without NavSharp™

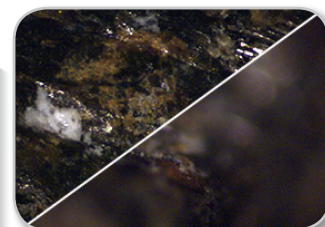


ViewSharp™

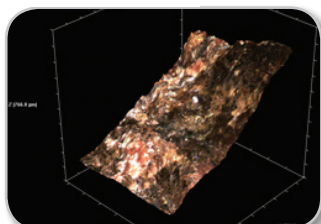
ViewSharp™ constructs an image in which all surfaces are in focus simultaneously, and creates a 3D topography image. ViewSharp™ guarantees the highest focal quality in Raman images, including the topography image, for a unique 3D chemical visualization of the sample. There is no longer a need to do an automatic focus point by point, making it faster than ever!

3D Topography

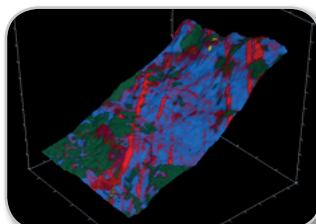
In-Focus Rapid Raman Images



With/Without ViewSharp™



3D topography of a rutile sample



3D Raman image of a rutile sample

Technical Details

The three technologies NavMap™, NavSharp™ and ViewSharp™ can be used together or work independently.

- Maximum overall height: 30 mm
- Δz (depth), from the objective characteristics: 8.5 μm for 10x, 0.2 μm for 100x
- Δx , Δy (lateral), from the objective characteristics: 1.1 μm for 10x, 0.2 μm for 100x

Recommended Configuration

EasyNav™ is compatible with HORIBA's LabRAM® HR Evolution & XploRA® Series Raman microscopes.

- Windows 10 64 bit, i7 6700, 16 GB RAM
- High resolution video camera \geq 3 Megapixel
- Bright-field objective (5x for NavMap™, 10x, 50x, 100x)
- High accuracy XY sample stage, motorized z device

Find out more: www.horiba.com/ramaneasynav

HORIBA
Scientific

info.sci@horiba.com

USA: +1 732 494 8660
UK: +44 (0)20 8204 8142
China: +86 (0)21 6289 6060

France: +33 (0)1 69 74 72 00
Italy: +39 2 5760 3050
Brazil: +55 (0)11 2923 5400

www.horiba.com/scientific

Germany: +49 (0)6251 8475 0
Japan: +81 (75) 313 8123
Other: +33 (0)1 69 74 72 00