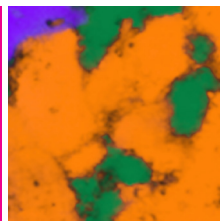




## KnowItAll: Raman spectral searching

Spectra database covering many applications



Wiley's HORIBA Edition of the KnowItAll® Informatics system offers an integrated environment for complete spectral searching, analysis, and data mining.

From spectra  
to chemical  
identification  
within seconds

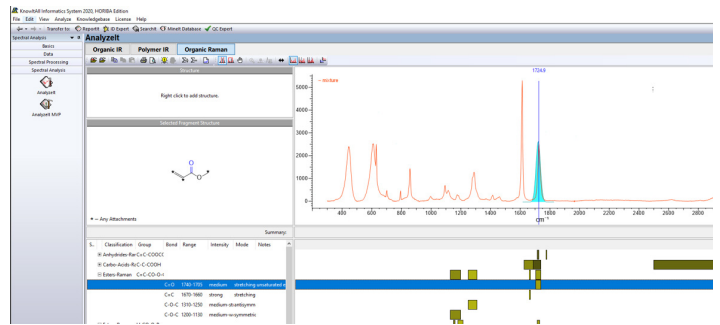
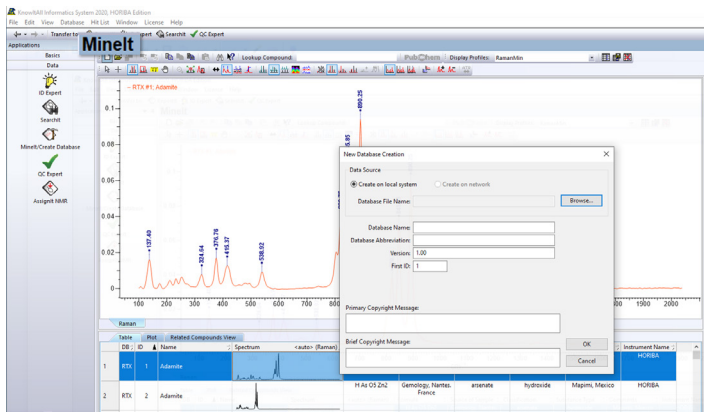
With HORIBA's Raman spectrometers, acquiring a good quality Raman spectrum is easy – however, linking that spectrum to a chemical identification can require more advanced knowledge. The KnowItAll® software can take the user from spectrum to identification within seconds, at the touch of a button.

**KnowItAll® HORIBA Edition** has a modular architecture, allowing a configuration to be built from a basic starter package through to a fully configured platform.

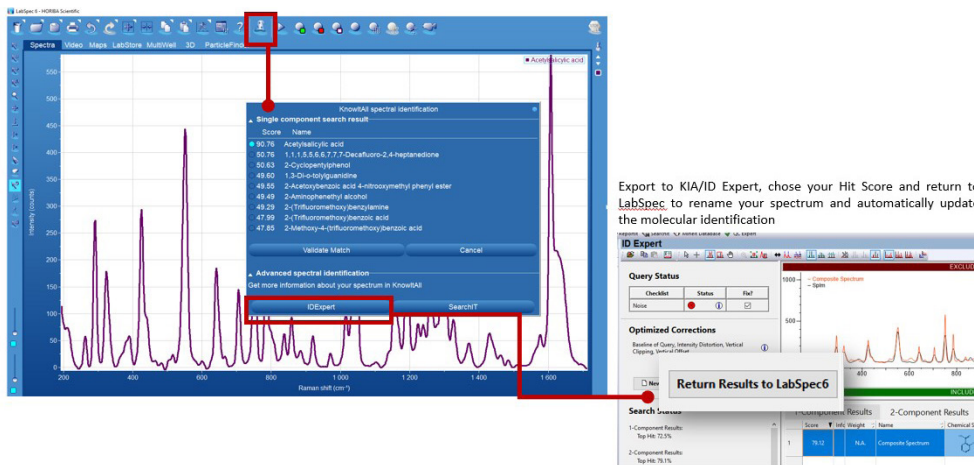
The basic package includes SearchIt™ for database spectral searching, Minelt™ for database visualization and mining and Mixture Analysis (which identifies individual components in a mixture spectrum, through database searching).

The basic package includes:

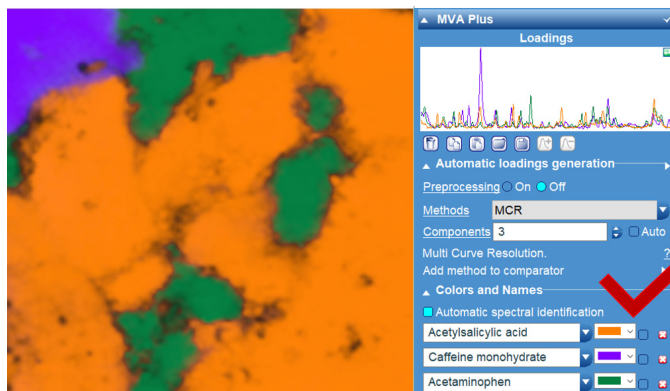
- **ID Expert™** – One click Spectral identification of an unknown spectrum, with optimized pre-processing and automated selection of single, multi component and peak searching and functional group analysis.
- **SearchIt™** for database spectral searching with advanced features such as spectral mixture analysis
- **Minelt™** for spectral database creation and management using spectra, structures and meta data. It includes advanced tools for data mining.
- **ProcessIt™** for Spectral Processing
- **Analyzelt™** for spectrum/ structure correlation tool
- **QC Expert™** – Raman and IR QC Comparison for quality control comparison of a sample spectrum against a reference spectrum
- **ReportIt™** – Reporting and Publishing Tool for creating complete reports with spectra, structures, tables, and more



The KnowItAll® environment is integrated within LabSpec 6 Software and contains Single Compound Search, ID Expert multi compounds and SearchIT - once a spectrum has been acquired it will be automatically identified directly in LabSpec.



Now your compounds found by LabSpec's Multivariate analysis are automatically identified using KnowItAll.



The HORIBA Edition of KnowItAll® includes a permanent license to HORIBA Raman Database comprising over 1500 spectra covering application areas such as forensics (including polymers, dyes/inks/pigments, and narcotics), semiconductors, bio-inorganics, and minerals. Also compatible with the full range of Raman databases from Wiley.



[info.sci@horiba.com](mailto:info.sci@horiba.com)

**USA:** +1 732 494 8660  
**UK:** +44 (0)1604 542 500  
**China:** +86 (0)21 6289 6060  
**Taiwan:** +886 3 5600606

**France:** +33 (0)1 69 74 72 00  
**Italy:** +39 06 51 59 22 1  
**India:** +91 (80) 4127 3637  
**Brazil:** +55 (0)11 2923 5400

[www.horiba.com/scientific](http://www.horiba.com/scientific)

**Germany:** +49 (0) 6251 8475 0  
**Japan:** +81(75)313-8121  
**Singapore:** +65 (6) 745-8300  
**Other:** +33 (0)1 69 74 72 00

