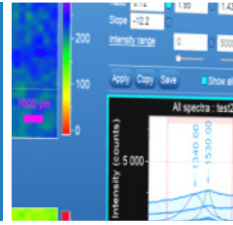
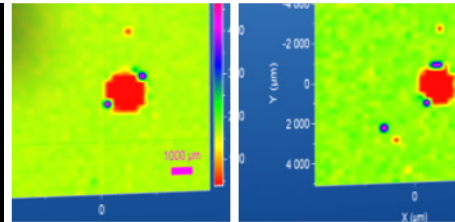




Automated DLC Coating Analysis



For industrial, research and quality control testing applications of DLC coatings



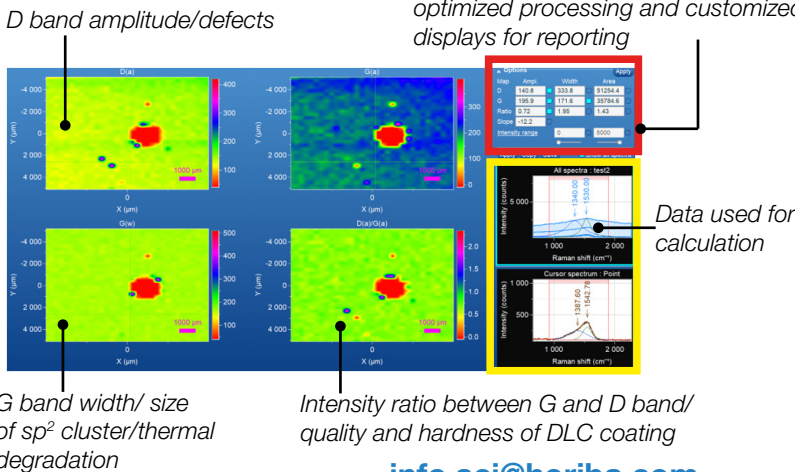
Embedded automated D:G analysis and enhanced analysis reports

“Diamond Like Carbon” is a thin carbon coating used to protect materials. It is commonly used in the hard disk drive industry due to its excellent protective properties and wear resistance. It is also used for similar reasons in high performance engines, where it can provide excellent protection of engine parts being used at very high speeds/temperatures.

Raman is an ideal technique for both research and industry offering high quality data, reliably and with significant speed advantages over other analytical techniques. Benefits for the analysis of DLC coatings not only includes the vast range of samples that are suitable for analysis but also the high information content - provides improved value for money.

The **DLC App** joins the LabSpec6 Software Suite and ensures rapid and reliable analysis in one click!

Automated analysis of DLC coating using optimized processing and customized displays for reporting



- Automatic DLC homogeneity and quality testing
- Defects and disorder in material
- Hydrogen content
- Analysis Report template
- Single point data to large map data sets

info.sci@horiba.com

www.horiba.com/scientific