

Fast-01/02

Aqualog A-TEEM Autosampler Accessories

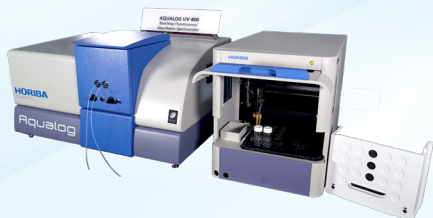
ELEMENTAL ANALYSIS
FLUORESCENCE
GRATINGS & DEM SPECTROMETERS
OPTICAL COMPONENTS
CUSTOM SOLUTIONS
PARTICLE CHARACTERIZATION
RAMAN / AFM-RAMAN / TERS
SPECTROSCOPIC ELLIPSOmetry
SPR IMAGING



For batch measurements in industrial QA/QC settings

Introducing the NEW Fast-01/02 Autosampler accessories for batch measurements in many A-TEEM applications

A-TEEM Molecular Fingerprinting is a new optical technique that is ideal for comprehensive component analysis in



Aqualog A-TEEM Spectrometer with FAST-01 Autosampler

a variety of QC/QA applications, from water to wine to pharmaceuticals and beyond. It is a simple, fast, "column free" spectroscopic technique that simultaneously



measures the absorbance, transmission and fluorescence of samples in solution and offers some unique benefits over traditional analytical

techniques such as chromatography, mass spec IR and more. Learn more at www.a-teem.com.

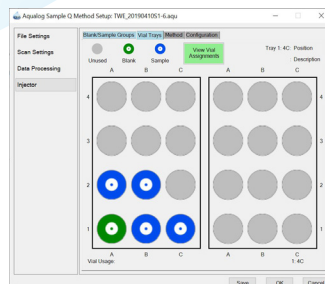
By connecting a new Fast-01/02 autosampler accessory to the HORIBA Aqualog® A-TEEM spectrometer it can greatly facilitate your routine batch liquid analysis.

The Fast-01 is configured with 10 ml vials (up to 24 of them) and the Fast-02 comes with 2 ml vials (up to 96 of them) depending on your application needs. Both feature complete temperature control. Fluorescence is highly sensitive to temperature fluctuations, so clamping the temperature is critical for precise A-TEEM molecular fingerprinting.

Sample vial repeats and injection volumes are easily facilitated with the Aqualog 4.2+ software, which also offers preconfigured blank files.

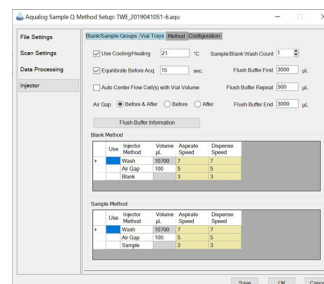
All data files can be exported with ISO-formatted time-date stamping and user-configurable Sample ID and repeat codes.

All aspects of the autosampler hardware control are at your fingertips, within the Aqualog software, with key real-time access features to facilitate the configuration and execution of your batch experiments, as well as priming, cleaning and maintenance.



Vial/Well Selection

The Method Setup section of the Aqualog Sample Q software allows the user to establish which vials are Sample, Blank or unused. This configuration shows the display for the two available trays of 12 each, of the 10 ml vials.



Experimental Method

The Method Setup section of the Aqualog Sample Q software allows the user to enable temperature control, temperature equilibration, wash counts and flushing parameters.

Key Features and Benefits:

- Speed, accuracy and precision
- Sample vial temperature control
- Plug and play temperature-controlled flow-cell sample compartment
- Excellent repeatability and negligible carryover between samples
- Fully integrated into Aqualog v4.2+ software

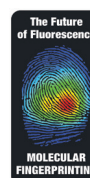
Fast-01 Specifications

Parameter	Specification
Vial Temperature Range	4° to 40° C (Peltier-controlled)
Vial Racks/Plates	Please select with your order: Fast-01: 10 ml vials in 1 or 2 trays of 12 vials (up to 24 vials total) Fast-02: 2 ml vials in 1 or 2 trays of 48 vials (up to 96 vials total)
Vials	10 ml septum screw cap
Injection Syringe	2.5 ml standard
Valve	Valco 0.75 bore valve
Sample Injection Loop	10 mL SS sample loop, 1/8" tubing with 1/16" tubing ends and fittings (Valco): (for 10 ml vials)
Vial dimensions (incl. cap)	Max. plate/vial height: 47 mm (incl. septa or capmat) Minimum vial height: 32 mm
Reproducibility	RSD ≤ 1.0% for partial loopfill injections
Wash	Programmable: Wash between injections and wash between vials
Air Gap	Adjustable volume; Before and/or after samples
Hardware	Specification
Operating Voltage	95 - 240 Volt AC ± 10%; 50 - 60 Hz; 200VA
Electrical	Standard 110V, Optional 220V (HORIBA PN 5500000264)
CE Compliance	Yes
Communication	Serial RS232 with USB Adapter
Optional Circulating Temperature Bath (Not included, but recommended for all A-TEEM work. HORIBA PN: 5500450520)	-25° C to +80° C (110 V)
Size	300 mm x 575 mm x 360 mm
Weight	21 kg
Working Temperature	10 - 40° C (indoor use only)
Related Aqualog Hardware & Software	Specification
Flow Cell Sample Compartment	Water jacketed flow cell
Flow Cell	80 µL (1 x 0.5 cm path length)
Software	Aqualog v4.2 and beyond



Aqualog Datastream Dashboard is powered by Solo Predictor software from Eigenvektor Research, Incorporated

HORIBA
Scientific



To learn more about the A-TEEM molecular fingerprinting technique, applications and uses of this autosampler, refer also to www.A-TEEM.com

www.aqualog.com



info.sci@horiba.com

www.horiba.com/scientific

USA: +1 732 494 8660
UK: +44 (0)1604 542 500
China: +86 (0)21 6289 6060
Taiwan: +886 3 5600606

France: +33 (0)1 69 74 72 00
Italy: +39 06 51 59 22 1
India: +91 80 41273637
Brazil: +55 (0)11 2923 5400

Germany: +49 (0) 6251 8475 0
Japan: +81(75)313-8121
Singapore: +65 (0)6 745 8300
Other: +33 (0)1 69 74 72 00