



## Auto Sampler Options for the EMIA/EMGA Elemental Analyzers



*Safely and stably streamline  
your measurement workflow*

## The Benefits

### Guarantees the accuracy of measurement results and avoids physical strain on operators

#### ■ Maximized accuracy and reproducibility

- Minimizes human errors and ambient dust contamination, resulting in precise and consistent results.
- Eliminates fluctuations in furnace temperature and timing of crucible setting for improved analytical result reproducibility.

#### ■ Enhanced safety

- During the measurement, the furnace, reaching temperatures of several thousand degrees Celsius, requires opening and closing for crucible insertion and removal. By reducing manual handling around the furnace, it minimizes the risk of contact with the hot components and preventing clothes, hands, or the like from being caught.



#### ■ Improved productivity and reduction of operator workload

- It facilitates more efficient operation and sample handling, resulting in reduced processing time and increased sample throughput.
- After preparing several samples, the measurements can be started while the operator is preparing the rest of the samples to save the total operation time - by automating repetitive tasks and time-consuming operations or maintenance, operators can focus more effectively on their work.



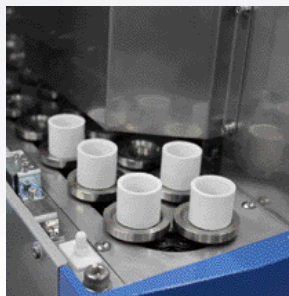
## More than 40 Years of Continuous Evolution

We have long been collaborating with professionals in the demanding steel industry to refine our Auto Sampler function. Thus, we are highly confident in its safety, durability and user-friendly operation.



## The Auto Sampler for the EMIA Series

- Up to 20 samples can be quickly handled by number or by the order in which they are placed. It also supports the addition of an accelerator feeding function. The number of sample loadings can be tailored to your needs.



- All areas accessible to the operator have safety covers with interlocks. This cover also prevents ambient dust that can influence the result, from entering the crucible.



Auto Sampler Unit  
with Turntable

Measurement Unit

The Auto Sampler can be retrofitted to the measurement unit with a minor modification.

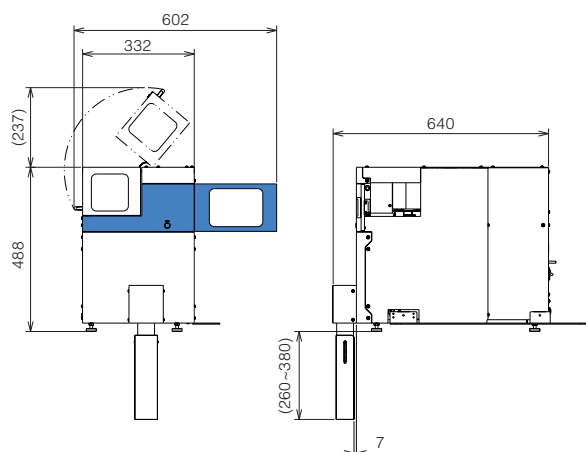
Watch the actual operation and performance in the video.



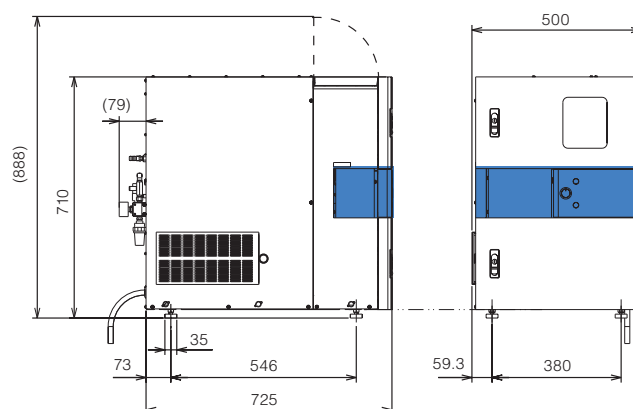
## Technical Specifications

<b>Power</b>	100 - 220V, 50/60Hz, 0.5kVA
<b>Gas</b>	N <sub>2</sub> or dried air (supplied from the measurement unit)
<b>Operation</b>	Control from the EMIA software, with Error Alarm function
<b>Option</b>	Customization of sample loading numbers, Accelerator feeding function, an extra interlock

## Dimensions



Auto Sampler Unit



Measurement Unit

## The Auto Sampler for the EMGA Series



The Auto Sampler can be retrofitted to the measurement unit with a minor modification.

Watch the actual operation and performance in the video.

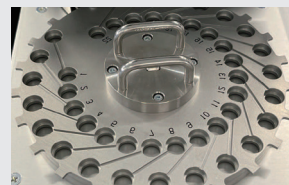


- The turntable allows for the placement of up to 22 samples, including fluxes. A standard equipment cover with an interlock is provided to protect the samples during measurement and prevent contact with the rotating disk. For additional security, an optional locking cover is available.

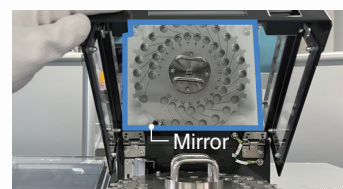
- The Auto Sampler Unit can be conveniently moved with a single touch to access the sample feeding section for maintenance purposes, ensuring smooth maintenance work.

- It enables automated analysis of various samples, excluding powders. It features a user-friendly design for secure sample placement and includes a function to stop operation if samples do not drop correctly.

Turntable



The inner circumference is for samples and the outer is for fluxes.

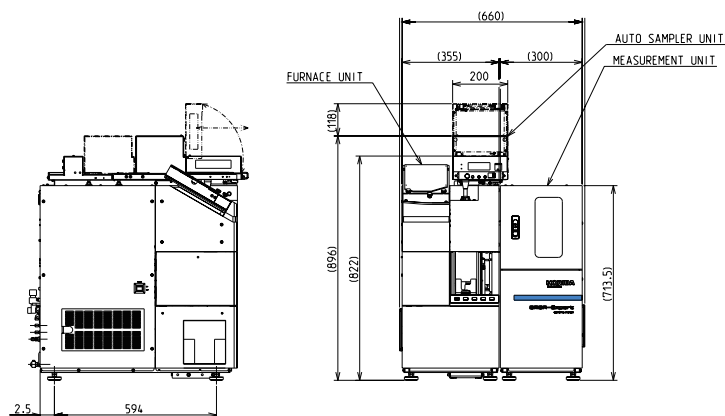


The inside of the Auto Sampler cover is equipped with a mirror, allowing operators to easily introduce samples and fluxes while looking at the mirror.

### Technical Specifications

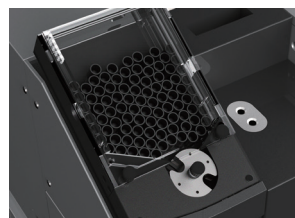
Power	Supplied from the measurement unit
Gas	Unnecessary
Operation	Control from the EMGA software, with Error Alarm function
Option	An extra interlock *Please inquire for samples with special shapes

### Dimensions



### Other automation options for EMGA Series

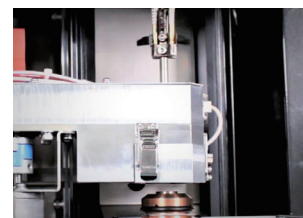
#### Crucible Loader



Precise capture and positioning of crucibles by rotary mechanism.  
Maximum stock: 100 pcs.



#### Auto Cleaner



Two rotating brushes clean the upper and lower side electrodes after each measurement.



**HORIBA, Ltd.**

website <https://www.horiba.com>

contact <https://www.horiba.com/scientific/contact-us/>

Bulletin:HRE-3710A

Explore the future

Automotive | Process & Environmental | Medical | Semiconductor | Scientific

**HORIBA**