

## Yumizen Chase the Case #41

- Chronic Myelomonocytic Leukemia -



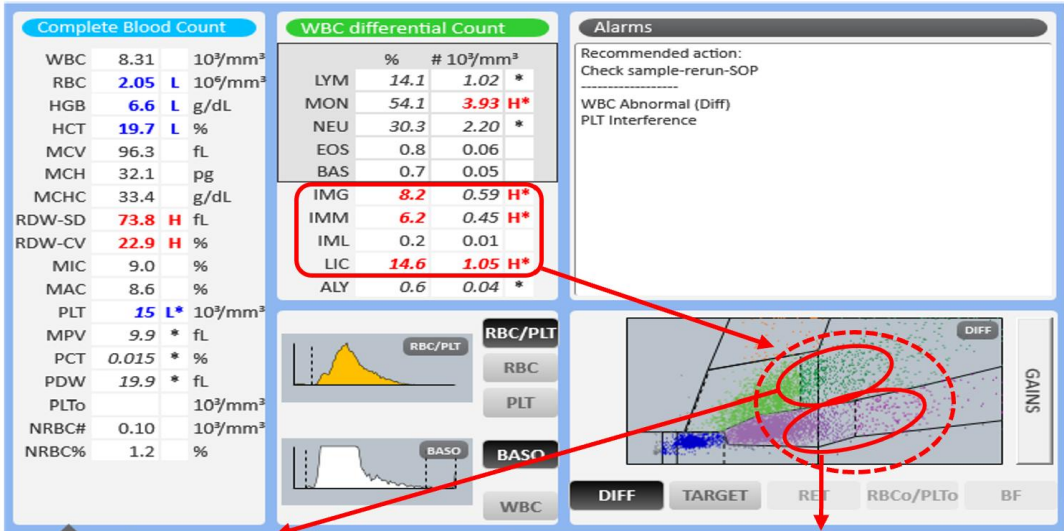
**Patient Demography:** Male, 65 years

**Symptoms:** Generalized weakness, loss of appetite, low-grade fever, weight loss

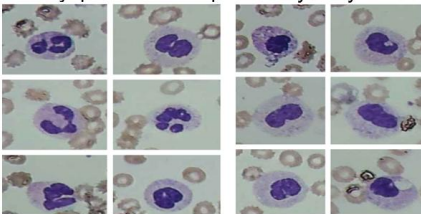
**Diagnosis:** Bi-cytopenia: anemia and thrombocytopenia

**Microscopic Review:** Blast: 6%, Neutrophil: 13%, Lymphocytes: 14%, Monocytes: 33%, Abnormal monocytes: 14%, Myelocytes: 9%. Dysplasia seen in granulocytic series cells (Degranulation and loss of nuclear segmentation in neutrophil series of cells seen)

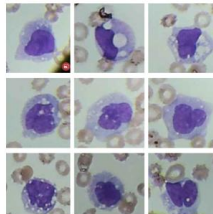
**How Yumizen Can Assist:** On the DIFF scattergram, we observe a population corresponding to the presence of immature cells as an overlap in the Neutrophils and Monocytic threshold. This is due to the dysplasia noted on the WBC differential. The population is situated between the granulocytic-IMG (on slide microscopy seen as Myelocytes, dysplastic neutrophils) and monocytic-IMM (vacuolated Monocytes) immature cell lines.



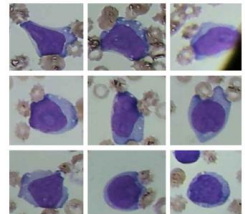
Dysplastic Neutrophils + Myelocytes



Abnormal Monocytes



Blast Cells



Subscribe to Chase the Case: <https://horiba.link/chase-case>

Contact: [webmaster.med@horiba.com](mailto:webmaster.med@horiba.com)

Editorial Team: Daniele Pacheco, Andreia Rodrigues

Dr. Prakash Suvasia, Sebastien Raimbault - HORIBA Brazil & France

This clinical case has been provided by  
Hematology Department,  
Diagnostics Reference Laboratory  
Mumbai, India