

# Yumizen

## Chase the Case #4

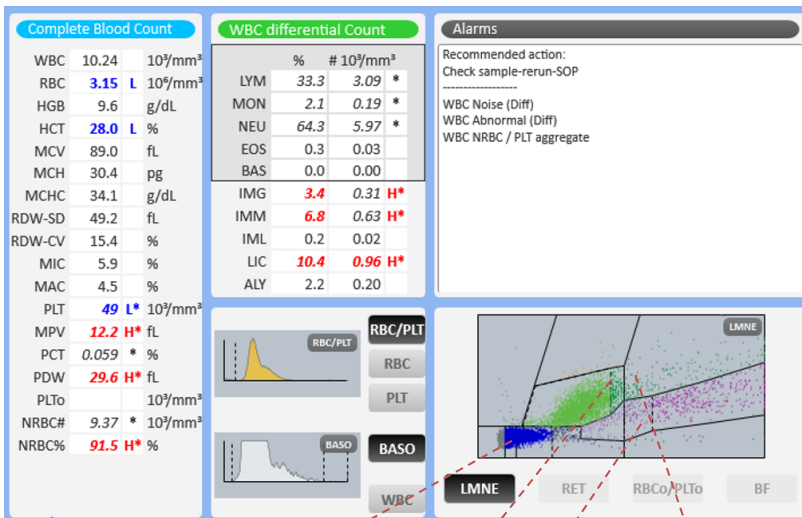


**Patient demography:** Male, 62 Years

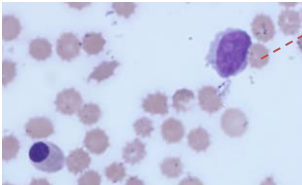
**Diagnosis :** COVID, Anemia, Thrombocytopenia, Sepsis. Hepatic impairment, Pneumonia

**Observation:** Moderate amount of toxic granules, immature granulocytes with vacuoles. Polychromasia, crenated RBCs, some Howell-Jolly bodies

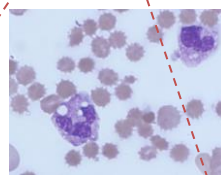
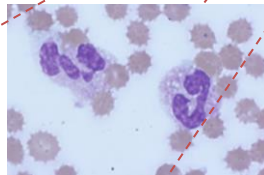
**Other Tests information:** AST- 91u/L; CRP-209mg/L; Urea-32 mg/dL **Microscopic count:** Promyelocyte 2; Myelocytes 3; Metamyelocyte 5; Band Neutrophils 11; Erythroblasts: 121/100 leucocytes



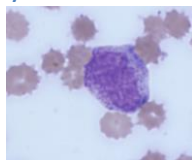
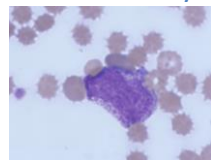
Lymphocytes & Erythroblast



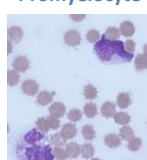
Left-shifted toxic Neutrophils



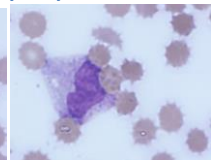
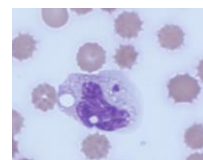
Myelocytes



Promyelocyte



Metamyelocyte



\* Dotted lines are meant for indication.

HORIBA Team:

Fábio Oliveira, Daniele Pacheco, Shubham Rastogi

To find out more, [contact us](#). Back issues/subscription at our [web](#)

HORIBA Medical Brazil & HORIBA Medical France

Natalia Zuccheratto

Scientific Advisor

HORIBA Brasil