



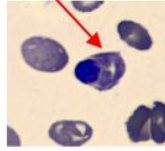
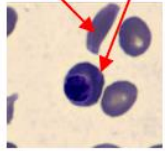
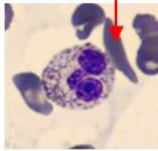
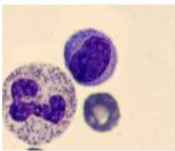
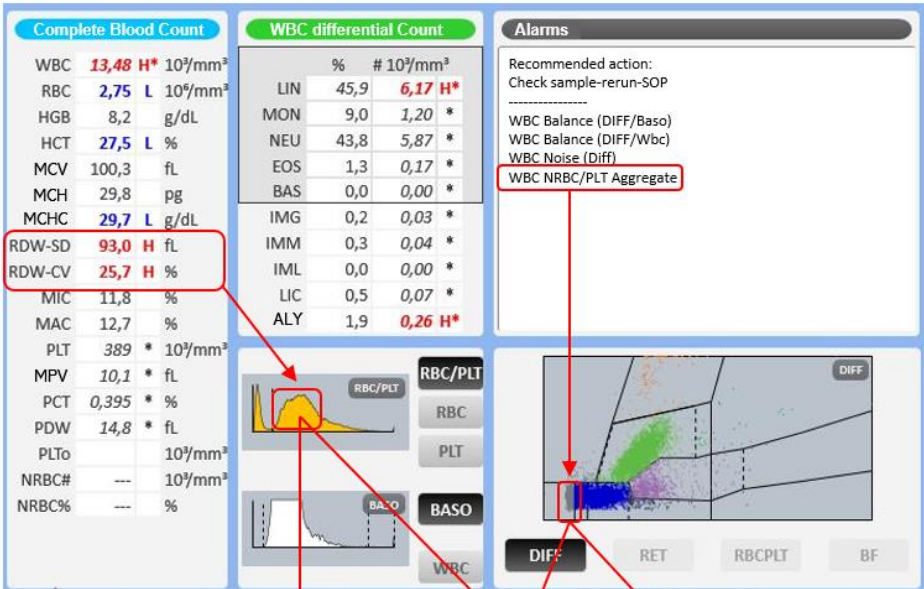
Patient Demography: Male aged 42

Symptoms: Progressive fatigue and mild joint pain, though without severe pain crises

Diagnosis: Monitoring patient with sickle cell anemia

Microscopic Review: Neutrophils: 31%, Segmented: 29%, Lymphocytes: 62%. Observation: Atypical Lymphocytes, toxic granulations in neutrophils and 7% NRBC.

How Yumizen Can Assist: The instrument features advanced technology for counting atypical lymphocytes and analyzing morphological abnormalities of nucleated red blood cells similar to the size of small to normal-sized lymphocytes. The sensitive parameters such as RDW-CV and RDW-SD and abnormally broad RBC histogram indicating a high degree of poikilocytosis help to look for abnormally shaped RBCs, such as Sickle Cells. The LMNE matrix (slightly increased ALY) and Baso histogram also indicate the presence of a few nucleated red blood cells. These parameters enable monitoring of changes over time.



Neutrophils with toxic granulation & Sickle cells

Nucleated RBCs & Sickle cells