



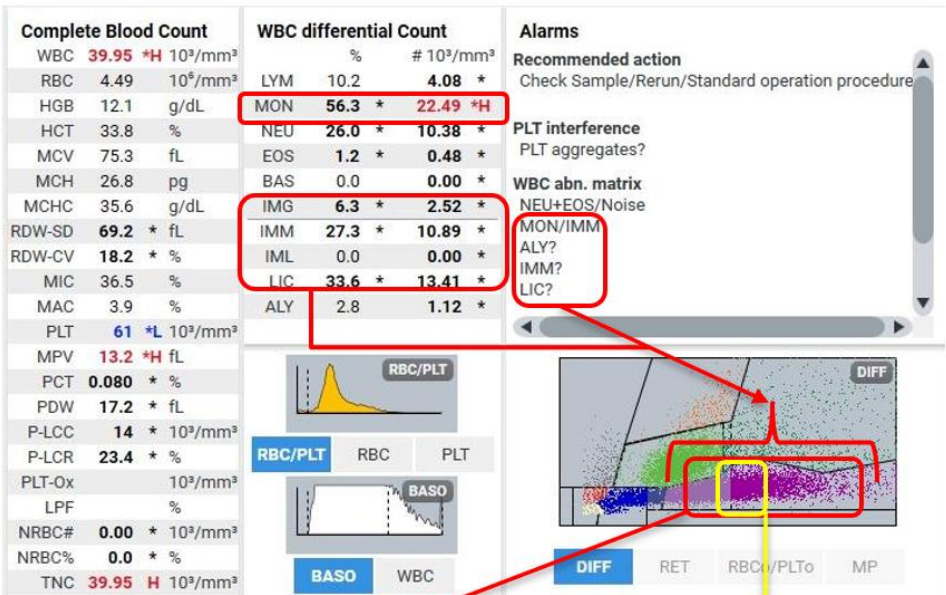
Patient Demography: Male aged 58

Symptoms: Generalized weakness, loss of appetite, low grade fever, weight loss

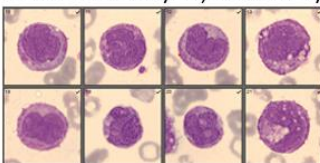
Diagnosis: Anemia under investigation - Acute Myeloid Leukemia M5

Microscopic Review: Blast: 48%, Neutrophil: 5%, Lymphocytes: 12%, Monocytes (abnormal monocytes + promonocytes) 25%, Myelocytes: 7%, Metamyelocytes: 1%, Promyelocyte: 2%

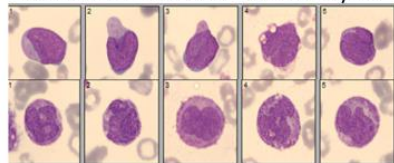
How Yumizen Can Assist: On the DIFF scattergram, we observe the presence of immature monocytic population. The population is essentially composed of all step of monocytes maturation between the monoblasts, promonocytes and monocytes. The monoid population is perfectly defined in the DIFF scattergram in the dedicated area, with no cells in IML zone. In this case, the utility of immature WBC differential parameters helped for provisional diagnosis of acute myeloid leukemia of monocytic lineage.



Abnormal Monocytes, Promonocytes



Blast cells + Abnormal Promonocytes



Subscribe to Chase the Case: <https://horiba.link/chase-case>

Contact: webmaster.med@horiba.com

Editorial Team: Dr. Ankur Lath, Ayesha Khan, Dr. PK Soju,

Daniele Pacheco, Andreia Rodrigues,

Prakash Suvasia, Sebastien Raimbault - HORIBA India, Brazil, & France

This clinical case has been provided by a laboratory in India.