



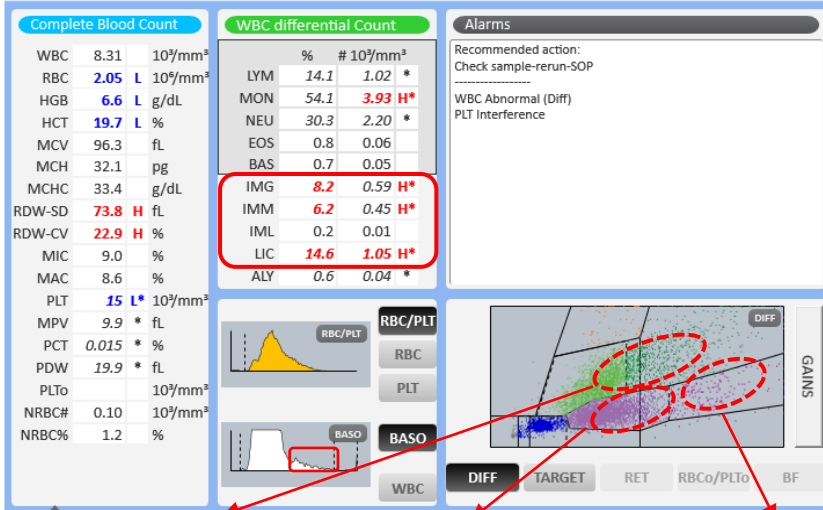
Patient Demography: Male, 85 years old

Diagnosis: Anemia with Bi-Cytopenia

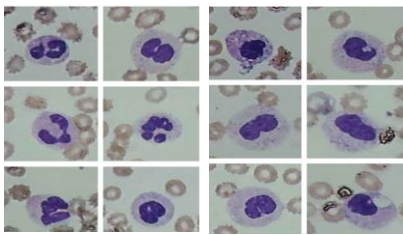
Symptoms: Generalized weakness, loss of appetite, low grade fever, weight loss

Microscopic Review: Blast: 4%, Neutrophil: 13%, Eosinophils: 1%, Lymphocytes: 16%, Monocytes: 43%, Abnormal monocytes: 14%, Myelocytes: 9%. Dysplasia seen in granulocytic series cells (Degranulation and loss of nuclear segmentation in neutrophil series of cells seen)

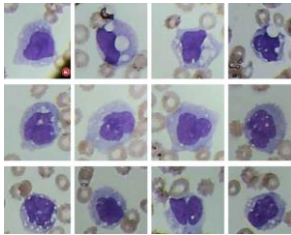
How Yumizen can assist: On the DIFF scattergram, we observe a population corresponding to the immature cell presence as an overlap in Neutrophils and Monocytic threshold. This is due to the dysplasia noted on the WBC differential. The population is situated between the granulocytic-IMG (on slide microscopy seen as Myelocytes, dysplastic neutrophils) and monocytic-IMM (vacuolated Monocytes) immature cell lines. On the BASO histogram, we observe the immature granulocytic population.



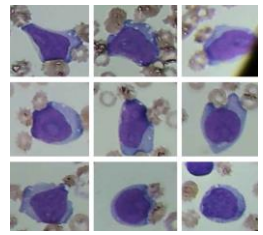
Dysplastic Neutrophils
Myelocytes



Monocytes
Abnormal Monocytes



Blast cells



Subscribe to Chase the Case: <https://horiba.link/chase-case>

Contact: webmaster.med@horiba.com

Editorial Team:

Daniele Pacheco, Jaqueline Valente, Andreia Rodrigues

Prakash Suvasia, Sebastien Raimbault - HORIBA Medical Brazil & France

This clinical case has been provided by
Dr. Trupti Shetty, Dr. Leena Salunke, Dr. Anupa Dixit

Mr. Manohar, Dept. of Hematology
Suburban Diagnostics Reference Laboratory

Mumbai, India