



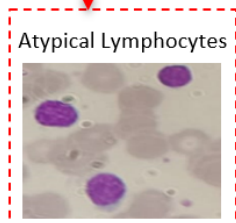
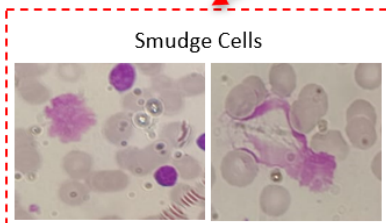
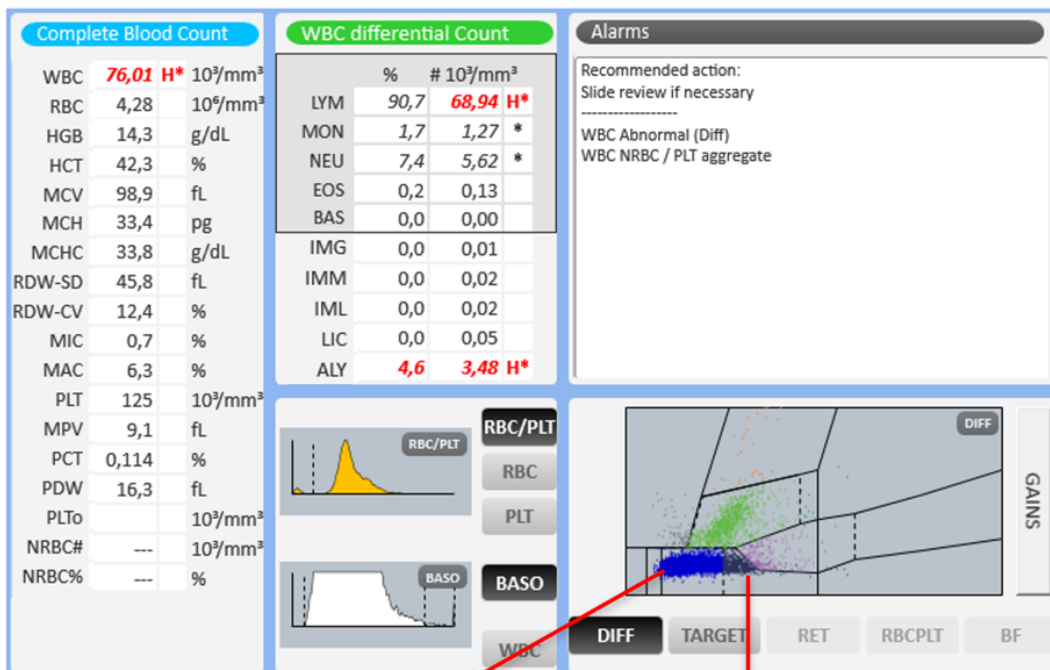
Patient Demography: Male aged 57

Diagnosis: Chronic Lymphocytic Leukemia (CLL)

Microscopic Review: Neutrophils 8, Lymphocytes 90, Monocyte 1, Band cell 1.

Other Information: CD19, CD5, CD23 phenotype and weak expression of monoclonal surface immunoglobulins in immunophenotyping.

How Yumizen Can Assist: On the DIFF scattergram, we observe the presence of atypical lymphocytes and immature lymphocytic cells from the CLL corresponding to high lymphocyte and atypical lymphocyte counts.



Subscribe to Chase the Case: <https://horiba.link/chase-case>

Contact: webmaster.med@horiba.com

Editorial Team:

Daniele Pacheco, Jaqueline Valente, Mariana Bueno

Prakash Suvasia, Sebastien Raimbault - HORIBA Medical Brazil & France

This clinical case has been provided by a laboratory in Brazil.