

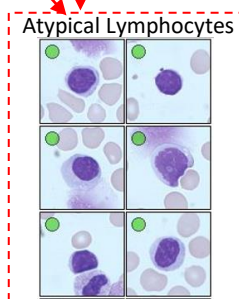
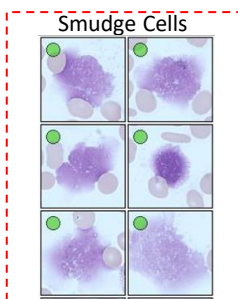
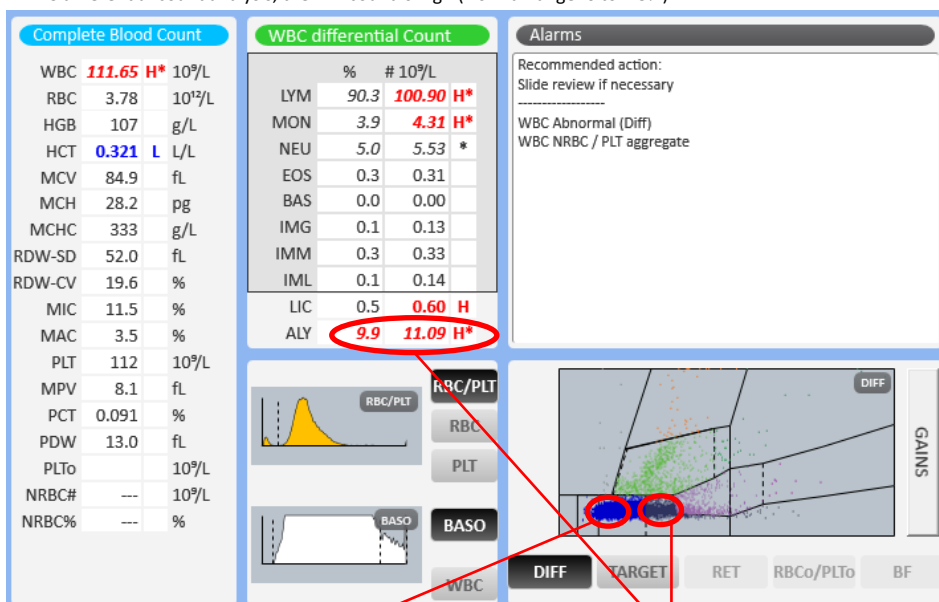


Patient Demography: Male aged 64

Diagnosis: Lymphoproliferative syndrome

Microscopic Review: Neutrophils 4%, Lymphocytes 92%. The majority of the cells are small with clumped chromatin and scant cytoplasm. Smudge cells seen (++), Prolymphocytes 2%, Monocytes 2%.

How Yumizen can assist: On the DIFF scattergram, we observe the presence of atypical lymphocytes and cell population moving towards immature lymphocytic cells hints for Lymphoproliferative disorder like CLL. On the Baso histogram, we observe large cells on the right of the curve which correspond to the abnormal form's cells seen in CLL. On WBC differential large cell analysis, the ALY count is high (Normal range: 0 to 2.5%).



Subscribe to Chase the Case: <https://horiba.link/chase-case>

Contact: webmaster.med@horiba.com

Editorial Team:

Daniele Pacheco, Jaqueline Valente, Andreia Rodrigues

Shubham Rastogi, Prakash Suvasia, Sebastien Raimbault - HORIBA Medical Brazil & France

This clinical case has been provided by a laboratory in France.