



Patient Demography: Male aged 32

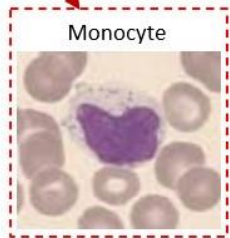
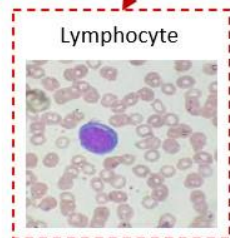
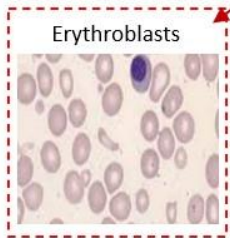
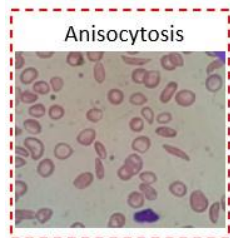
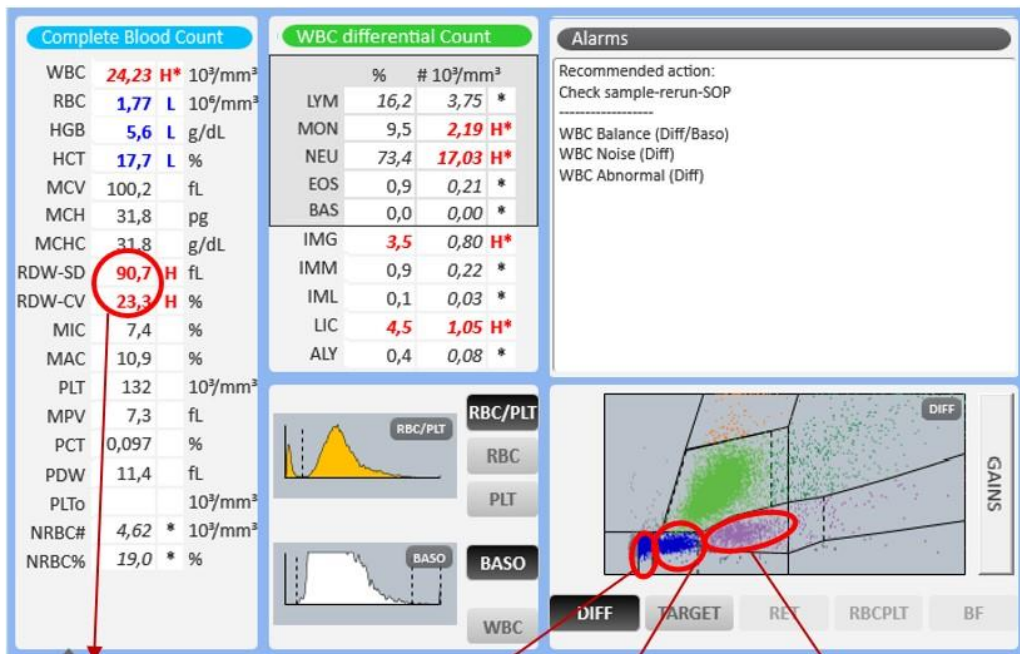
Diagnosis: Sickle cell anemia

Other Information: Bilirubin 7.7, INR 1.73, TTPa 1.33 RATIO. The presence of abnormal levels or immature neutrophils, lymphocytes, and monocytes in sickle cell anemia is an immune response of the body to the disease, which may be related to frequent infections and a compromised immune system.

Microscopic Review: Neutrophils 85, Lymphocytes 10, Monocytes 2, Erythroblasts 74, Band cells 3,

Anisocytosis +++, Dacrocytes, Elliptocytes, Sickle cell, Polychromasia, Howell –Jolly, Target cell.

How Yumizen can assist: The RDW CV and SD results make a detailed observation of the red blood cell abnormality.



Subscribe to Chase the Case: <https://horiba.link/chase-case>

Contact: webmaster.med@horiba.com

Editorial Team:

Daniele Pacheco, Jaqueline Valente, Andreia Rodrigues

Shubham Rastogi, Sebastien Raimbault - HORIBA Medical Brazil & France

This clinical case has been provided by a laboratory in Brazil.