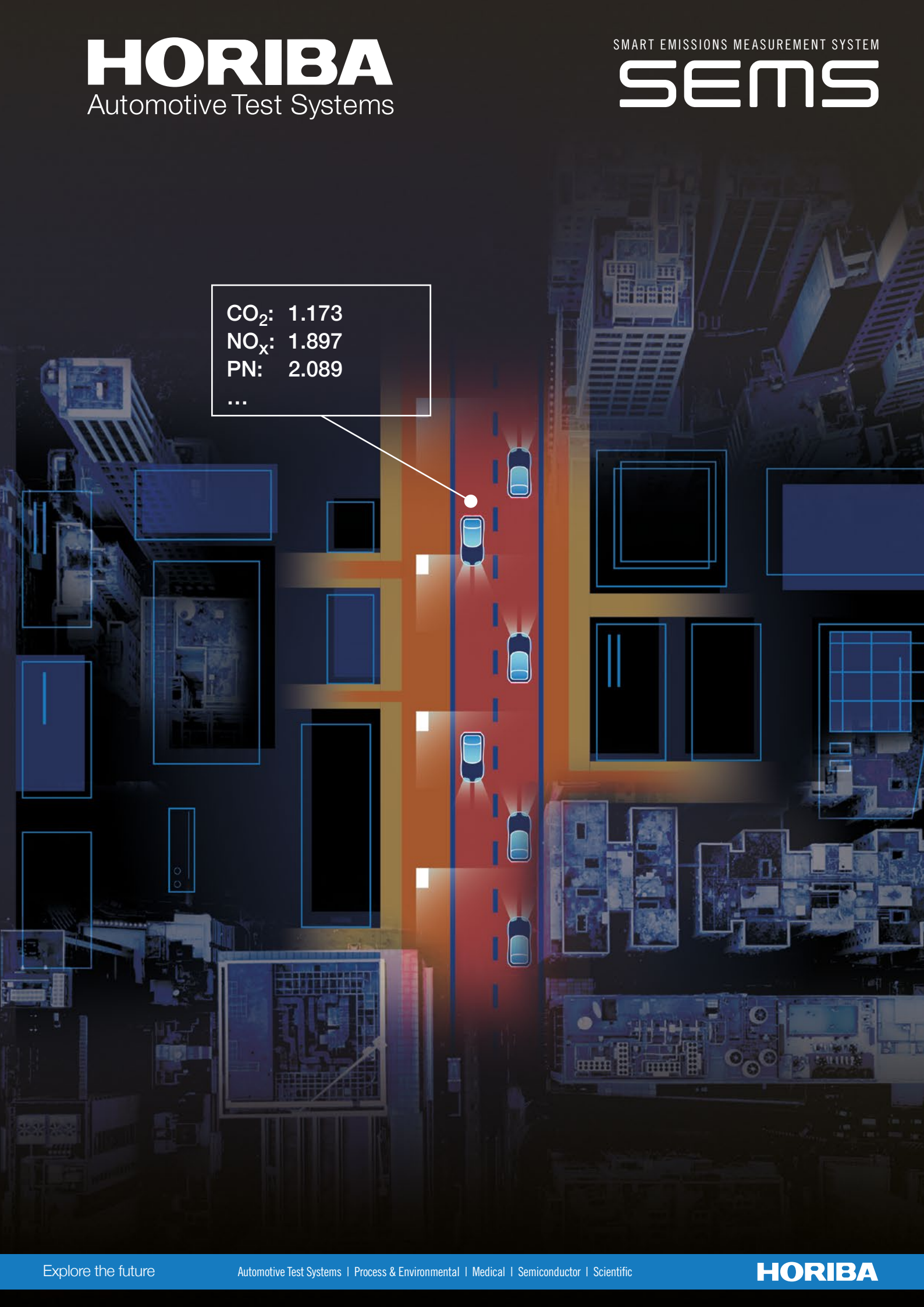


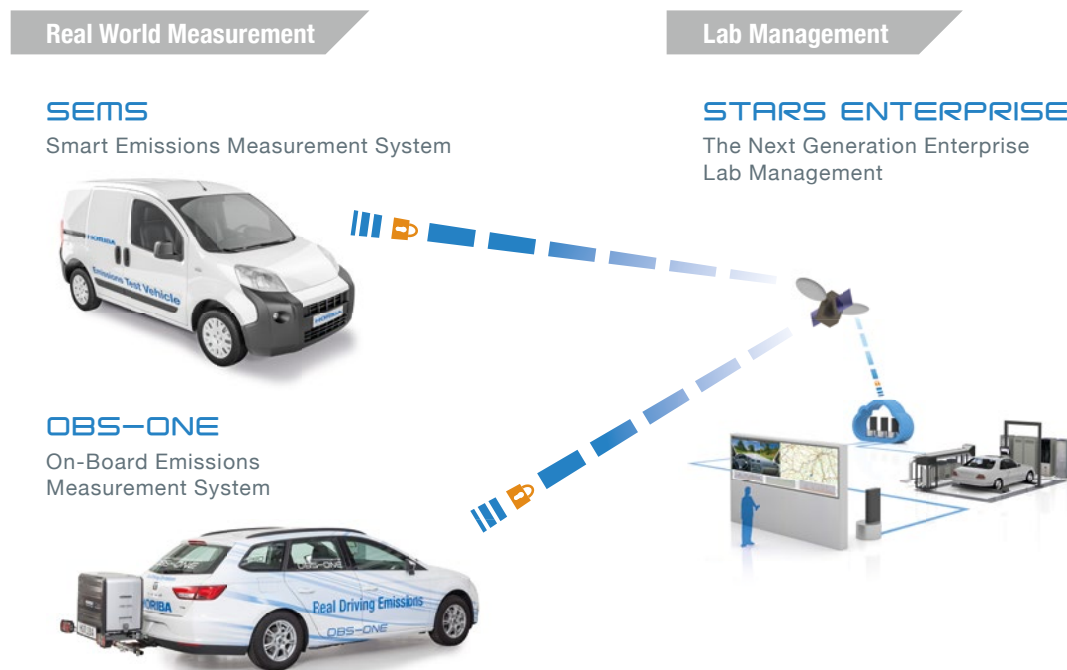
CO<sub>2</sub>: 1.173  
NO<sub>x</sub>: 1.897  
PN: 2.089  
...



# SEMS

## Smart Emissions Measurement System

SEMS, the Smart Emissions Measurement System, is a highly compact unit. It can be used to collect emissions data and offers multiple analysis options. Due to SEMS' small size, measurements can be taken over a long period of time during road use and from a statistically reliable number of vehicles. Fields of application include the testing for conformity and development and the long-term tracking of the vehicle's environmental influence under real operating conditions.



### FEATURES

- » Included in the RDE 4 Regulation (EU 2018/1832) for In-Service Conformity
- » Invisible from the outside, small and easy to install
- » Independent from vehicle or engine vendor
- » Use of OBD interface data possible
- » Applicable for mass data management
- » Integrated into STARS Enterprise platform

# KEY BENEFITS

## Mass Data Management of Emissions Data

The SEMS allows to collect emissions data from different sources (e. g. light- and heavy-duty vehicles, non-road mobile machinery, vessels) and analyze them immediately when they occur. While some parameters are measured directly ( $\text{NO}_x$  and  $\text{NH}_3$ ), others are calculated through the data processing. This combined data is then used to fulfill customer requirements such as individual trip reports or field pollution reports.



### COMPARABLE DATA

- » Standardized sensors
- » Real-time emissions monitoring



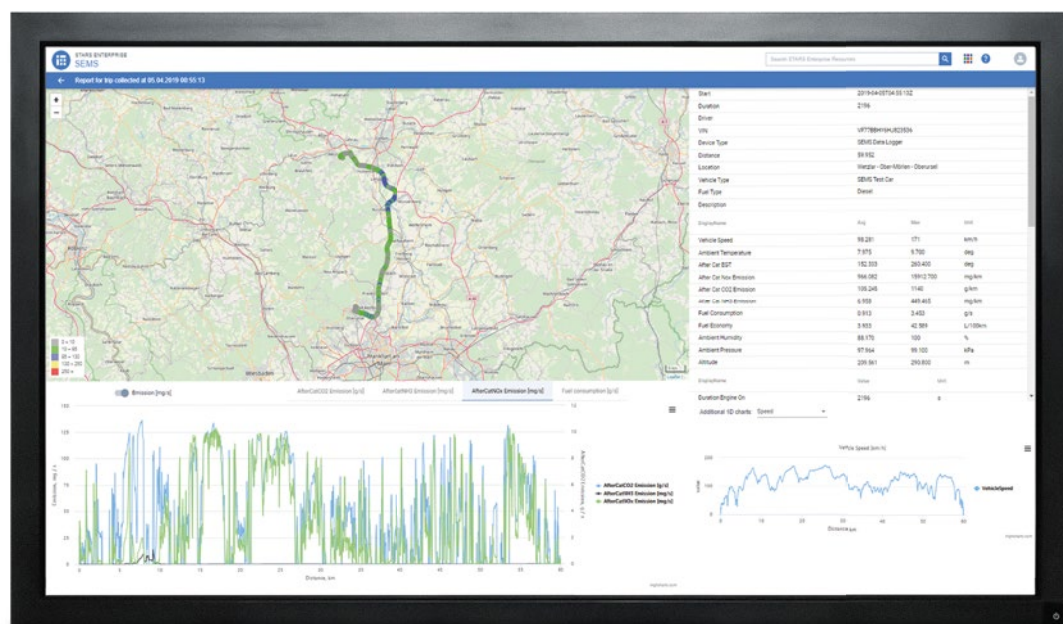
### SIMPLE

- » Easy and fast installation and integration
- » Automatic data upload to cluster server



### EXPANDABLE

- » Additional sensors or analysis possible
- » Open and flexible interface

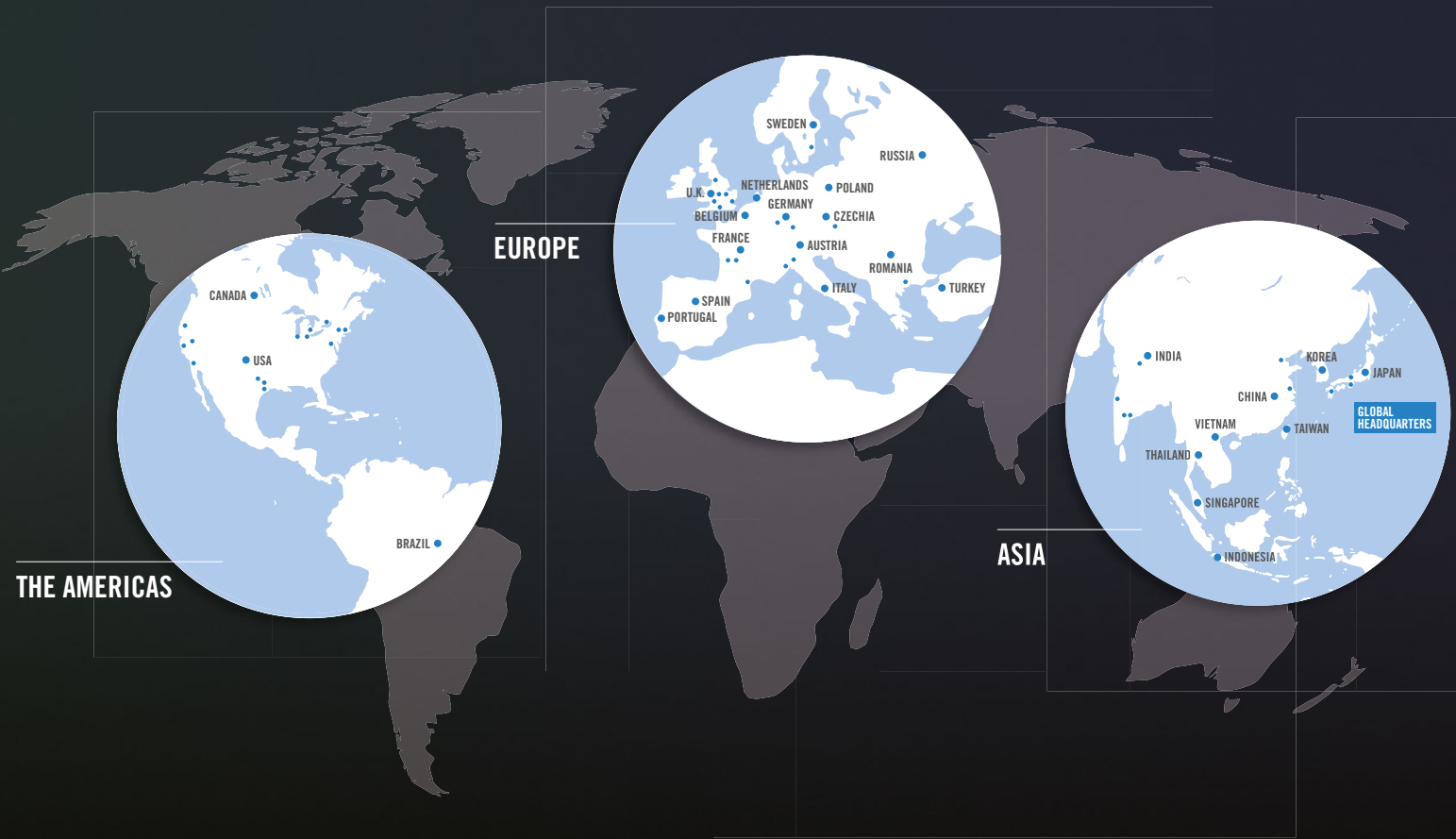


# THE HORIBA GLOBAL NETWORK

**ASIA**  
HORIBA Ltd.  
2 Miyano Higashi  
Kisshoin Minami-ku  
Kyoto, Japan  
info@horiba.co.jp

**EUROPE**  
HORIBA Europe GmbH  
Hans-Mess-Straße 6  
61440 Oberursel  
Germany  
info.he@horiba.com

**THE AMERICAS**  
HORIBA Instruments Inc.  
5900 Hines Drive  
Ann Arbor, MI 48108  
USA  
sales-ats.us@horiba.com



THE AMERICAS

EUROPE

ASIA



(1) HORIBA continues contributing to the preservation of the global environment through analysis and measuring technology. (2) The contents of this brochure are subject to change without prior notice, and without any subsequent liability to this company. It is strictly forbidden to copy the content of this brochure in part or in full. All brand names, product names and service names in this brochure are trademarks or registered trademarks of their respective companies. (3) HE-B-SEM-USA-19-V1

[WWW.HORIBA.COM](http://WWW.HORIBA.COM)